

USER MANUAL

Portable Car Player

CONTENTS

Contents -----	01
Function Description -----	02
Installation Method -----	03
Cigarette Lighter Power Plug -----	04
Bluetooth Pairing Connection -----	04
Audio Output Method -----	05
Audio Output Method -----	06
Reversing Camera Connection(CVBS/AHD) -----	07
Mirrorlink (iPhone) -----	08
Mirrorlink (Android) -----	08
Apple CarPlay(wired & wireless) -----	09
Android Auto(wired & wireless) -----	10
Common Issues And Basic Troubleshooting -----	11
Common Issues And Basic Troubleshooting -----	12
Common Issues And Basic Troubleshooting -----	13
Series Product Display -----	14
Series Product Videos -----	15
Series Product Display -----	16
Series Product Videos -----	17
Series Product Display -----	18
Series Product Videos -----	19
Series Product Videos -----	20
Series Product Videos -----	21
Series Product Videos -----	22

FUNCTION DESCRIPTION

Note: This manual is a series of product manuals, explaining one product as an example. Please refer to the functions available on the specific model you purchased.

AV IN

- ◆ Video input interface. Connect the reversing camera through the 2.5mm plug to the device. (some models need to Connect the reversing camera through the 2.5mm plug to the 2.5mm AUX to RCA adapter cable, Then connect to the device.)

USB Port

- ◆ You can plug in a USB device to play music, video, and view pictures.
- ◆ Additionally, Mirrorlink, CarPlay, or Android Auto can also be connected through this port. Remote control signal receiver. (Only some models have USB port)

TF Card slot

- ◆ Insert a TF card to play music, videos, and view pictures. (supported by some models)

AUX Out

- ◆ Output the sound to other audio equipment through the 3.5mm AUX cable. (Only available in certain car models)

IR

- ◆ Remote control signal receiver. (Only some models have remote control)

TYPE-C IN

- ◆ Type-C power plug (some models are DC 3.5mm power cord plug).

MIC IN

- ◆ 3.5mm microphone jack. (External lavalier microphone can be connected). (supported by some models)

V-OUT

- ◆ Output the video signal to other monitor devices using the 3.5mm AUX cable. (supported by some models)

POWER

- ◆ Power button for powering on/off. (supported by some models)

INSTALLATION METHOD

The mounting bracket received shall prevail.

There are 3 types of brackets, and the installation methods are as follows:

Installation method 1:

Glass suction cup type suspension installation.

Bracket 1



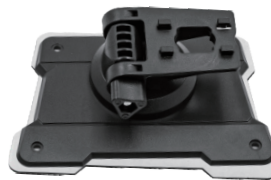
Installation example:



Installation method 2:

Desktop horizontal installation.

Bracket 2



Installation example:



Installation method 3:

Desktop horizontal installation.

Bracket 3



Installation example:



CIGARETTE LIGHTER POWER PLUG

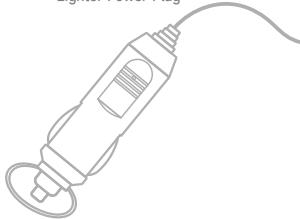
Cigarette lighter power plug

This device is powered by the cigarette lighter power plug.

After installing the device, insert the power plug into the cigarette lighter socket to activate it for use.

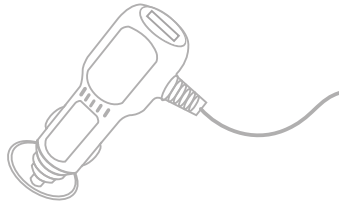
Style 1

Standard Cigarette
Lighter Power Plug



Style 2

Cigarette lighter power plug
with 1 USB ports



The actual goods received shall prevail.

Bluetooth pairing connection

You can use Bluetooth music or Bluetooth calls. When using wireless CarPlay or Android Auto, you need to establish a Bluetooth connection first.

Connection Method:

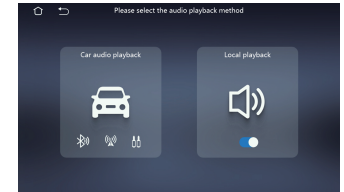
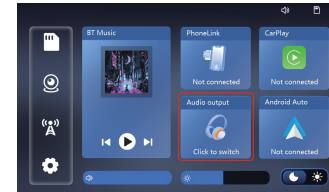
1. Power on the device and turn it on.
2. Enable the Bluetooth function on your mobile phone, click to search for devices, and once you find the Bluetooth name of the current device, click to connect.

AUDIO OUTPUT METHOD

Audio output method

There are 4 audio output methods:

If your car is equipped with a stereo system, we recommend disabling the player's built-in speaker. Instead, transmit the audio from the player to the car stereo using either FM transmission, AUX output, Bluetooth transmission.



1. Built-in speaker output sound.

The built-in speaker of the player has poor sound quality. We recommend turning it off whenever possible and transmitting the sound to the car's stereo system.



Built-in speaker



2. FM transmits sound to the original car radio:

1. Six preset FM transmission frequencies, and then use the original car radio to search for the transmission frequency.
2. Manually set the FM transmission frequency:



FM signal transmission

- 2.1. Adjust the original car radio to an empty channel position, such as: "92.3MHz" (to avoid conflicts with local radio and interference signals).
- 2.2. Set the FM transmission frequency to match the frequency of the original car, such as: "92.3MHz".
- 2.3. At this point, the sound will be transmitted to the original car speakers.

AUDIO OUTPUT METHOD

Audio output method

3. Transmit the sound to the car stereo using AUX cable.

This is our preferred method, but only some car models have an AUX interface that allows for transmitting sound to the car stereo using the AUX cable.



4. Transmit sound to car speakers via Bluetooth. When using CarPlay or Android Auto, the original car radio can be connected with the phone via Bluetooth. Bluetooth(A2DP protocol) supports almost lossless audio transmission from the player to the car speakers.



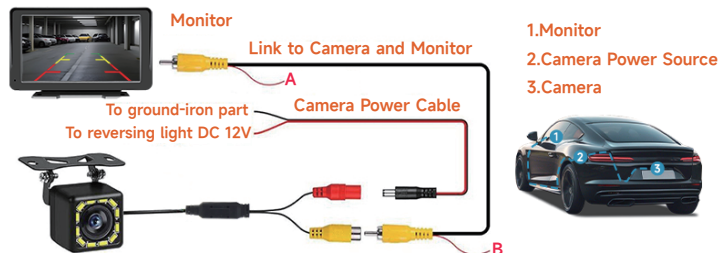
REVERSING CAMERA CONNECTION

Reversing camera connection(CVBS/AHD)

Note: The supported functions should be based on the purchased model

Style 1

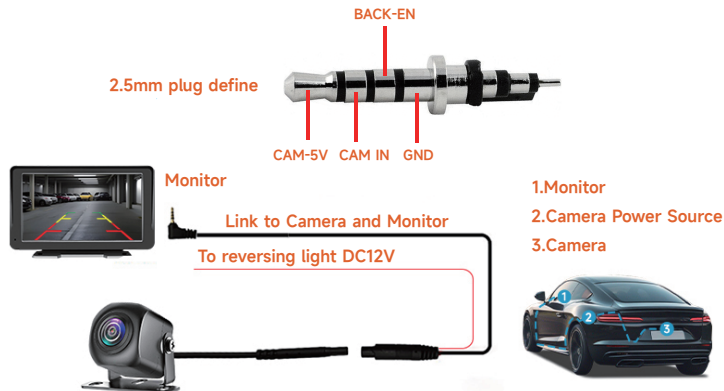
Connect the reversing camera through the 2.5mm plug to the 2.5mm AUX to RCA adapter cable, Then connect to the device.



Please connect A/B to the video input trigger wire, ONLY WHEN some monitors may require additional trigger signals to display the reversing image. (This model does not require this connection)

Style 2

Connect the reversing camera through the 2.5mm plug to the device.



MIRRORLINK



Mirrorlink (iPhone)

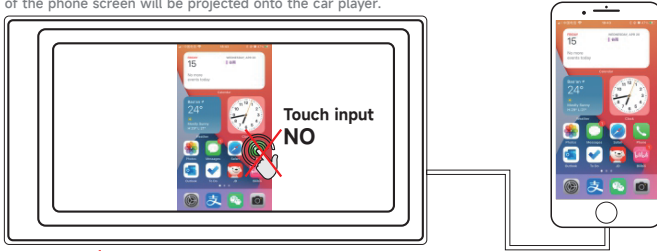
Note: The supported functions should be based on the purchased model

Wireless:

Click on the iOS image icon on the player, then search for the WiFi name corresponding to the device on your phone. Enter the WiFi password for the device, and once connected successfully, select "Car-AirPlay" in the screen mirroring on your iPhone.

Wired:

After entering the phone link app, tap on Apple mirror icon, use the USB data cable to connect the device to your phone, and complete the necessary authorization on the phone. And then the content of the phone screen will be projected onto the car player.



You can't control your iPhone on the player.



Mirrorlink (Android)

Note: The supported functions should be based on the purchased model

Wireless:

Click the Autolink icon on the player, then scan the QR code on your phone to download and install the Autolink Pro application. After successful installation, open the Autolink Pro application on your phone, select the option to search for wireless devices, then click and confirm authorization.

Wired:

When using an Android device, after connecting the USB data cable, you will be prompted to install the APP software. After installation, plug the data cable again, it will enter the screen mirroring mode. And it can be operated on both the player screen and the phone screen.

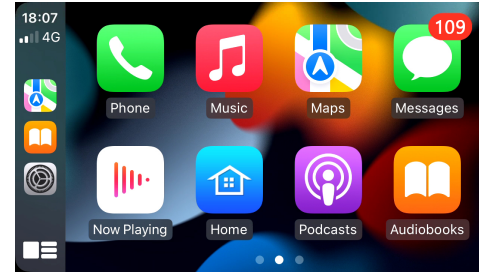
Only the image transfer is successful at this time. The sound can only be transmitted after the Bluetooth connection is successful.



You can also control your Android phone on the player.

APPLE CARPLAY

Apple CarPlay (wired & wireless)



1. Wired connection: Just connect the USB data cable, and then it will automatically enter the CarPlay interface.

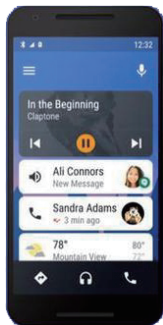
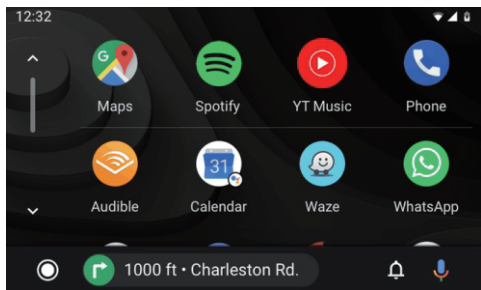
2. Wireless connection: first turn on the Bluetooth and wifi functions of the mobile phone, and then connect the bluetooth. Then it will automatically enter the CarPlay interface. (Note: The signal is transmitted through wifi at this time, so even if the Bluetooth function is turned off, it will be transmitted normally. When the wifi function is turned off, CarPlay will be disconnected).

Note: The supported functions should be based on the purchased model

ANDROID AUTO

Android Auto (wired & wireless)

This feature is not supported in all countries, and "Google Play" services need to be available locally.



You can also control your android phone on the player.

1. Need to download and install "Android Auto" software in "Google Play".
2. A mobile phone with Android 6.0 or higher must be used. Must use a valid data cable connection.
3. Wired connection: Just connect the USB data cable, and then it will automatically enter the Android Auto interface.
4. Wireless connection: First turn on the Bluetooth and wifi functions of the mobile phone, and then connect the Bluetooth. Then it will automatically enter the Android Auto interface. (Note: The signal is transmitted through wifi at this time, so even if the Bluetooth function is turned off, it will be transmitted normally. When the wifi function is turned off, Android Auto will be disconnected).

Note: The supported functions should be based on the purchased model

COMMON ISSUES AND BASIC TROUBLESHOOTING

(1) How do I connect carplay and Android auto?

Enable the Bluetooth function on your mobile phone, click to search for devices, and once you find the Bluetooth name of the current device, click to connect. When you connect it for the first time, the mobile phone will pop up a prompt, please click to use or trust the device.

(2) Does the player support installing applications like YouTube and Netflix?

The player supports connecting to CarPlay, Android Auto, and screen mirroring, but it does not support installing applications.

(3) AUX transmission audio noise?

Please make sure the AUX cable is fully inserted. If you still experience significant noise, it's possible that the AUX is not compatible with your car. Consider using the FM transmitter to transmit audio to your car instead.

(4) There is noise when transmitting audio to the vehicle via FM?

It's possible that the current FM transmission frequency is being interfered with by a local station, leading to conflicts in the device's FM transmission. Please try tuning into an unused frequency without any broadcasts to resolve the issue.

(5) How do I connect a mirror link?

Open the phone linking app, tap the Android mirror or Apple mirror icon on the device, connect the device and the phone using a USB data cable, and complete the necessary authorization on the phone.

(6) How to make the sound come out through the speakers in the car?

There are three points to consider in response to the question:

1. The device has a built-in speaker that can emit sound, and you can disable it in the system settings.
2. Utilize the FM transmitting function of the device to transmit the sound to the car's original radio. For instance, select 86.3MHz on the device, play music from a USB source, and tune the car radio to 86.3MHz to hear the sound.
3. Use the AUX OUT (3.5mm) interface to transmit audio to the car's speakers. This is the preferred method, but it is only available in certain car models.
4. Transmit sound to car speakers via Bluetooth. When using CarPlay or Android Auto, the original car radio can be connected with the phone via Bluetooth. Bluetooth(A2DP protocol) supports almost lossless audio transmission from the player to the car speakers.

(7) The Bluetooth connection fails or some functions are abnormal after the connection?

The Bluetooth connection issue may be caused by paired Bluetooth devices interfering with the phone's ability to connect to other devices or disrupting normal functionality.

Please follow these steps to troubleshoot the issue:

1. Delete any previously paired devices that are not currently connected to your phone.
2. Enable the Bluetooth function on your mobile phone, click to search for devices, and once you find the Bluetooth name of the current device, click to connect.

(8) Does Bluetooth connect to CarPlay or Android Auto automatically?

Here are a few points to consider:

1. Certain connected Bluetooth devices may prevent our device from automatically switching. To address this, please clear all paired Bluetooth devices on your mobile phone, restart both the mobile phone's Bluetooth and the vehicle's Bluetooth system, and then re-establish the Bluetooth connection.
2. Access the interface and ensure that the CarPlay switch is set to the "CarPlay" option.
3. Go to Settings - Basic Settings - Restore factory Settings.

(9) Playing music and talking on the phone too quietly?

Hold down the top of the screen with your finger and slide down. You can adjust the playing volume after pulling down the status bar; When you return to the home screen during a call, you can adjust the call volume in the status bar.

(10) Can't remember time and date?

Due to the high temperature in the car during summer, for safety reasons, the device does not have a battery and therefore cannot remember the time and date. After connecting your mobile phone, it will automatically update the time and date.

(11) Can't read or play SD and videos?

Here are a few suggestions to address the issue:

1. Please use an 8GB or 16GB storage card. Some large-capacity storage devices may not be supported.
2. Format the storage device to ensure that the file system is set to the default value. It's possible that partially encoded video or music files may not be recognized by the machine. In such cases, please use media files in common formats.

(12) The touch screen does not work properly?

To address this issue, try the following steps:

1. Long-press the touch screen with all five fingers.
2. After a few seconds, you should enter the touch correction interface.
3. Click the crosshair on the screen to restore proper functionality.

(13) CarPlay, Android Auto, Bluetooth is still not connected?

Go to the machine's Settings - basic Settings - restore factory Settings, then restart the machine and reconnect.

(14) The sound quality is poor?

1. Please try turning off the player's built-in speaker and use FM or AUX to transmit the sound to the car's speakers.
2. Please try changing the frequency range of the FM transmitter.

(15) The player cannot connect to the car's radio via Bluetooth?

The player's Bluetooth functionality allows it to connect to a phone, but it cannot connect to the car's radio via Bluetooth to transmit sound.

The player transmits sound to the car's radio through FM transmission and AUX.

(16) Does the player support a reverse camera and dashcam?

Yes, the player supports a reverse camera and dashcam, but the camera and dashcam need to be purchased separately.

(17) CarPlay is laggy and not smooth during use?

CarPlay functionality connects the phone to the player through a protocol. The player only provides the display, and all applications run on the phone. If there is lag, it may be due to using an older phone model. It is recommended to use an iPhone 8 Plus or a newer model and ensure that the system is updated to the latest version.

(18) Cannot operate anything on the player when using MirrorLink?

For iPhone MirrorLink, indeed, you cannot operate anything on the player and can only operate on the phone. However, for Android phones, when using MirrorLink with a wired connection, you can operate on the player.

(19) How do I adjust the volume?

To adjust the volume, press and hold the drop-down status bar at the top of the main interface. Alternatively, while using CarPlay or Android Auto, tap the white hover button on the screen to bring up the volume bar.

(20) The player frequently falls off from the support?

The player and the support have a locking mechanism. Please refer to the diagram to check if the player is securely locked in place.



Install the bracket buckle to the correct position on the back of the product



Push the product and buckle in opposite directions



When the buckle is in place, you will hear a click and as shown in the above picture, the buckle will be flush with the installation position on the back of the product



Note: There are three types of brackets in this diagram, and the specific accessories are subject to the actual product received

SERIES PRODUCT DISPLAY

7-9 inch Series Products:



7" Style 1



7" Style 2



7" Style 3



9" Style 4

SERIES PRODUCT VIDEOS

7-9 inch Series Products:

Note: This series of products, apart from their different appearances, have the same functions. Using one product as a case study for video explanation

Scan the code to watch the installation video



Scan the code to watch the operation video



Scan the code to watch Common problem handling



7-9 inch Series Products Upgraded version:



7" Style 1



7" Style 2

7-9 inch Series Products Upgraded version:

Note: This series of products, apart from their different appearances, have the same functions. Using one product as a case study for video explanation

Scan the code to watch the installation video



Scan the code to watch the operation video



Scan the code to watch Common problem handling



7-9 inch Series Products Built-in DVR:



7" Style 1



9" Style 2

7-9 inch Series Products Built-in DVR:

Note: This series of products, apart from their different appearances, have the same functions. Using one product as a case study for video explanation

Scan the code to watch the installation video



Scan the code to watch the operation video



Scan the code to watch Common problem handling



SERIES PRODUCT VIDEOS

10.26 inch Series Products:

Note: This series of products, apart from their different appearances, have the same functions. Using one product as a case study for video explanation



Style 1

Scan the code to watch the installation video



Scan the code to watch the operation video



Scan the code to watch Common problem handling



SERIES PRODUCT VIDEOS

10.26 inch Series Products:

Note: This series of products, apart from their different appearances, have the same functions. Using one product as a case study for video explanation



Style 2

Scan the code to watch the installation video



Scan the code to watch the operation video



Scan the code to watch Common problem handling



SERIES PRODUCT VIDEOS

10.26 inch Series Products Built-in DVR:

Note: This series of products, apart from their different appearances, have the same functions. Using one product as a case study for video explanation



Style 1

Scan the code to watch the installation video



Scan the code to watch the operation video



Scan the code to watch Common problem handling

